

# - Reed planted sludge dewatering beds -

## Wastewater Treatment plant Gräfenhainichen

AZV Mühlgraben  
Sachsen-Anhalt, Germany

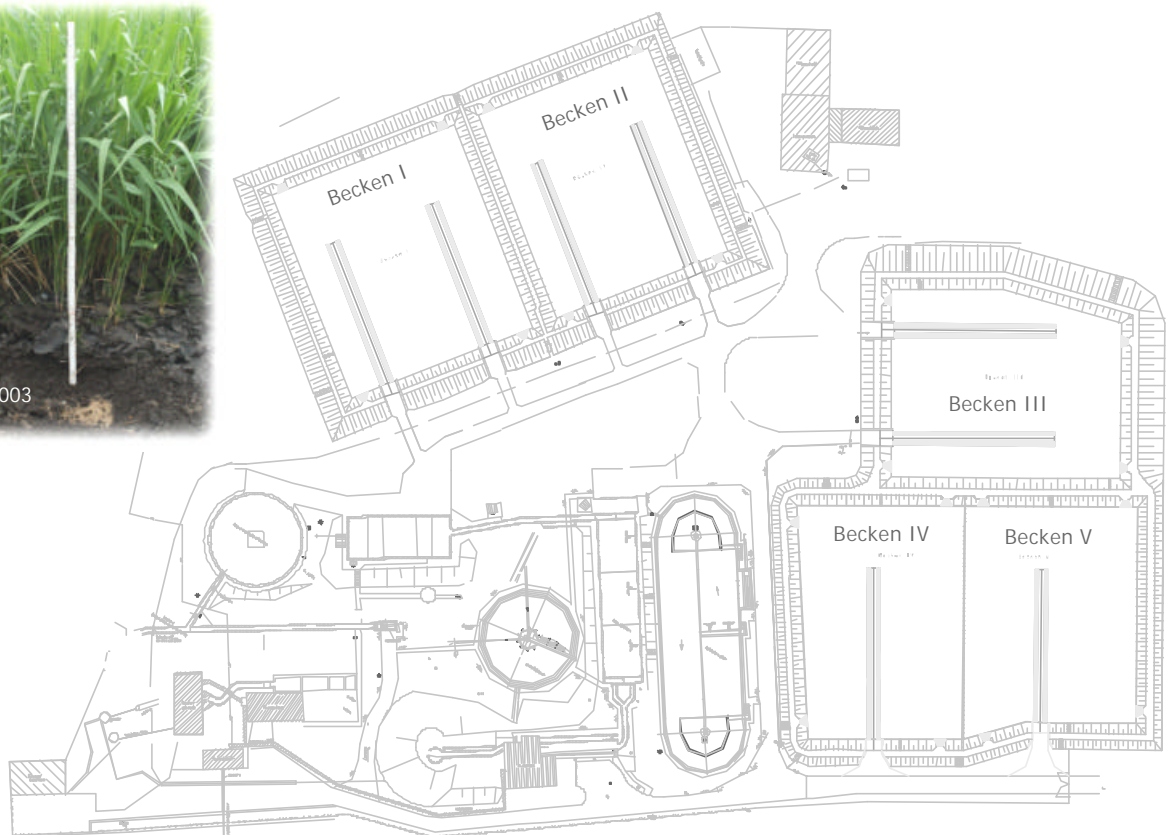
Surplus sludge treatment of a sewage treatment plant by activated sludge process with simultaneous sludge stabilisation

Population equivalent 15.000 PE

Planning: 09 – 12/2001  
Construction: 01 – 07/2002



Conversion of existing sludge drying basins (Becken I, II, III)  
New construction of two reed planted sludge dewatering beds (Becken IV, V)



# - Reed planted sludge dewatering beds -

## Wastewater Treatment plant Eilsleben

WAV Bördekreis  
Sachsen-Anhalt, Germany

Surplus sludge treatment of a sewage treatment plant by activated sludge process with simultaneous sludge stabilisation

### 1. Expansion stage (Bauabschnitt)

Person equivalent 2.750 PE

Planning: 1996

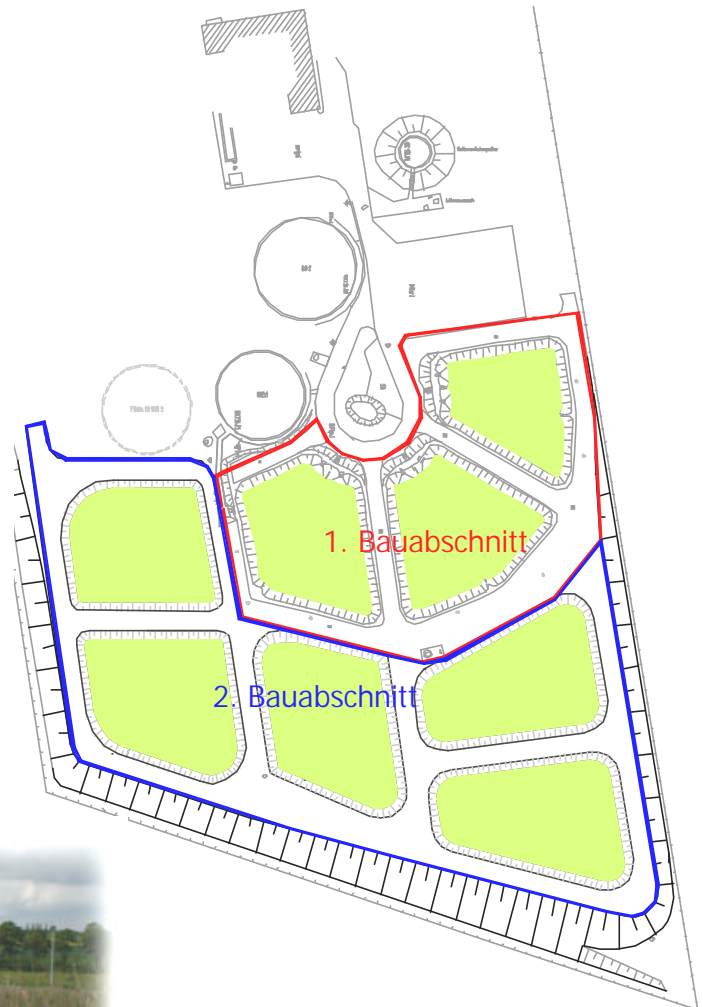
Construction: 1997

### 2. Expansion stage (Bauabschnitt)

Person equivalent 8.500 PE

Planning: 2000

Construction: 2002



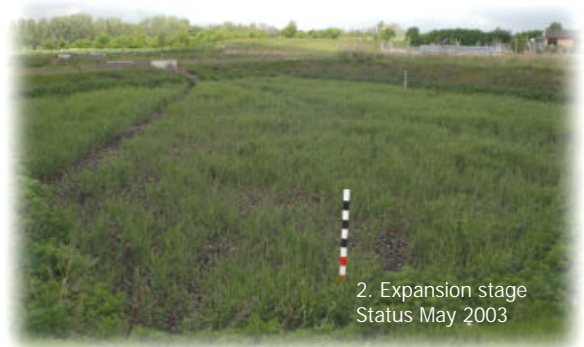
1. Expansion stage  
Status May 2003



1. Expansion stage  
Substrate, May 2003



1. Expansion stage  
Experimental hole,  
May 2003



2. Expansion stage  
Status May 2003